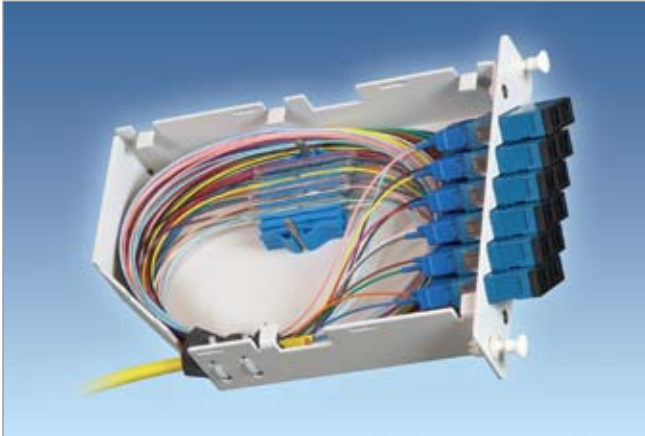
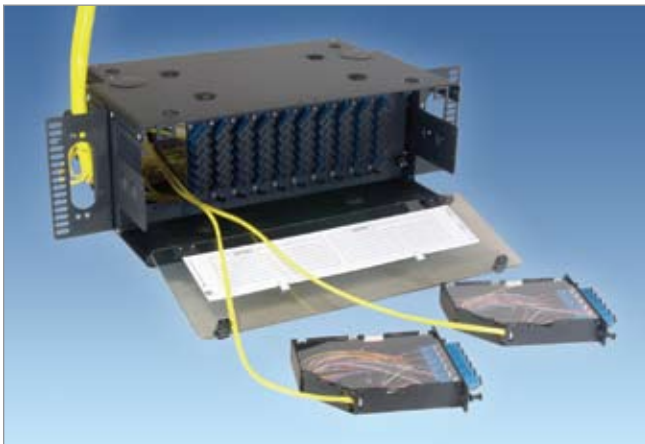


LightLink™ Poli-MOD Pigtailed Optical LightLink Interconnect Module



The LightLink™ Poli-MOD is an innovative Patch and Splice Module, which allows for increased patch and splice densities in an incremental growth platform. Based on the LGX® 118 foot-print, this product is capable of supporting up to 144 patch and splices in a standard 4U panel, resulting in 1296 patch and splices within a seven foot rack (38RU). Other features include front and rear accessibility, secured environment for the spliced fiber and easy fiber identification. Available in single-slot (up to 24-Fiber Patch and Splice) and double slot (up to 18-Fiber Patch & Splice) configurations, the Poli-MOD system allows for ease in incremental expansion without concerns of damaging or disturbing existing components.



Features

- Up to 24-port configurations
- Single-slot and double-slot
- LGX® 118 compatible
- Available in SC, ST and LC (additional configurations available upon request)
- Compatible with all LanSystem™ Patch Panels
- Includes module, cover, adapters, pigtails, splice sleeves, and all required hardware for installation
- Available in white or black, and single-mode or multimode
- Organized fiber routing
- Fixed solution, no moving parts
- Ease of splice identification
- Front and rear access



Rear view of 4RU panel with (12) Poli-MOD modules

Applications

- Telecommunications Closets
- Data Centers
- Customer Premise
- Local Area Networks
- Wide Area Networks
- Central Offices
- Hub Sites
- Cabinets
- Remote Terminals

LGX is a registered trademark of Furukawa Electric North America, Inc.

LightLink™ Poli-MOD Pigtailed Optical LightLink Interconnect Module

Ordering Information

LOADED WITH ADAPTERS AND PIGTAILS

Connector	Fiber Count	Color	UPC SM	APC SM	PC MM 62.5µm (Beige)	PC MM 50µm (Beige)	PC MM 50µm (Aqua)*
SC	6 Fiber	White	FM000705	FM000711	FM000706	FM001384	FM001380
		Black	FM000748	FM000751	FM000749	FM001383	FM001379
	12 Fiber	White	FM000631	FM000712	FM000700	FM000801	FM001365
		Black	FM000742	FM000752	FM000743	FM001022	FM001366
	18 Fiber	White	FM000666	FM000713	FM000701	FM001374	FM001372
		Black	FM000744	FM000753	FM000745	FM001373	FM001371
LC	12 Fiber	White	FM000699	FM001107	FM000826	FM000828	FM001364
		Black	FM000750	FM001106	FM000825	FM000827	FM001363
	24 Fiber	White	FM000935	FM000993	FM000938	FM000942*	FM000940
		Black	FM000936	FM000994	FM000937	FM000941*	FM000939
ST	6 Fiber	White	FM001156	NA	FM001164	FM001160	NA
		Black	FM001155	NA	FM001163	FM001159	NA
	12 Fiber	White	FM001154	NA	FM001162	FM001158	NA
		Black	FM001153	NA	FM001161	FM001157	NA

LOADED WITH ADAPTERS ONLY

Connector	Fiber Count	Color	UPC SM	APC SM	PC MM (Beige)	PC MM (Aqua)
SC	6 Fiber	White	FM001125	FM001123	FM001385	FM001381
		Black	FM001124	FM001122	FM001386	FM001382
	12 Fiber	White	FM000911	FM001113	FM000913	FM000915
		Black	FM000910	FM001112	FM000912	FM000914
	18 Fiber	White	FM001137	FM001135	NA	NA
		Black	FM001136	FM001134	NA	NA
LC	12 Fiber	White	FM001111	FM001109	FM001370	FM001368
		Black	FM001110	FM001108	FM001369	FM001367
	24 Fiber	White	FM001141	FM001139	FM001378	FM001376
		Black	FM001140	FM001138	FM001377	FM001375
ST	6 Fiber	White	FM001168	NA	FM001176	NA
		Black	FM001167	NA	FM001175	NA
	12 Fiber	White	FM001166	NA	FM001174	NA
		Black	FM001165	NA	FM001173	NA

ACCESSORIES AND REPLACEMENT PARTS

PART NO.	DESCRIPTION
C204455-0250	#4-40 x 1/4", Stainless Steel Faceplate Screw
FM000632	Replacement Module Cover
CS000470	Replacement Adapter, SC/APC, Duplex, Green
CS000475	Replacement Adapter, SC/UPC, Duplex, Blue
CS000476	Replacement Adapter, SC MM, Duplex, Beige
C178298	Replacement Adapter, LC/UPC, Simplex, Blue
C058475	Replacement Adapter, SC/UPC, Simplex, Blue
C209560	Replacement Adapter, SC MM, Simplex, Beige
C147880	Replacement Adapter, SC/APC, Simplex, Green
S000206	Fusion Splice Sleeve, FP-03, 40mm
FC000052	Splice Sleeve Holder, 8-Position
FM000948-B	Adapter Bracket for mounting single Poli-Mod
FM001636	Corning™ CCH and PCH 145mm Adapter Bracket

* MM 50µm Giga-Link 2000 fibers



FM000948-B bracket is used to mount a single Poli-Mod to a 19" or 23" equipment rack or into limited space applications (e.g. traffic control cabinets)



FM001636 bracket allows standard LGX modules to be mounted into existing Corning Cable Systems™ CCH series and PCH series racks and wall mount products.