



288 Max Fiber Capacity Unit



432 Max Fiber Capacity Unit

Future Access™ FDH-700 Fiber Distribution Hub

The Future Access™ Fiber Distribution Hub (FDH-700) is designed to provide a local convergence point in the Outside Plant environment, housing optical splitters that link feeder cables from the CO to distribution cables serving customer premises. Its compact size and modular-based platform aid in installation efficiency, while keeping initial deployment costs down. This modular approach allows a service provider to incrementally grow the FDH as their take rate increases. Distribution modules are available in 72-port configurations, providing the option of incrementally populating the FDH at the onset of deployment. This results in immediate cost savings to the service provider since distribution and splitter modules can be installed as paying customers take the offered services.

The ruggedly constructed enclosure features a unique, patent-pending, dual entry door system, providing unobstructed front and side access to the inside of the enclosure without additional movement. A Telcordia GR-3125 compliant design and powder coated 1/8" Aluminum construction guarantee durability and reliability, even in the harshest environmental conditions.

Intuitive fiber management is a key element of the Future Access™ FDH. The routing scheme minimizes training requirements, and allows for the initial deployment (and any unforeseen repositioning of previously deployed fibers) to be executed with the efficiency.

Each Future Access™ FDH features a self-locking internal swinging frame, which houses the distribution field and provides management of all jumper cordage installed into the FDH. In conjunction with the dual-door enclosure, this aids in providing unobstructed rear connector access for future maintenance requirements. Central to the functionality of the Future Access™ FDH is the splitter module. This splitter module is universal to all Future Access™ Fiber Distribution Hubs, resulting in shorter lead times and less inventory for the provider to manage. They feature AFL's Bend Insensitive fiber, minimizing the chance of signal loss due to high traffic/densely packed patch panel routing installations. A self-locking latch mechanism securely holds the module into the FDH, and increases efficiency with a tool-less installation.

Features

- Modular distribution platform allows for incremental deployment costs and immediate cost savings
- Small size is unobtrusive in residential deployments
- Enhanced fiber management provides simplified routing and termination
- Dual-door entry allows easy access to distribution and fiber management fields
- Flexible pad and pole mounting options for deployment in the convenient location

Specifications

PARAMETER	VALUE	
	72 / 144 / 216 / 288 FIBER	360 / 432 FIBER
Configuration	Pad, Pole, or Post* Mount	Pad, Pole, or Post* Mount
Height (pole mount)	26"	33"
Height (pad mount)	38"	45"
Dimension (W x D)	20" x 20"	20" x 20"
Connector Type	SC-APC	SC-APC
Cable Type	Loose Tube or Ribbon	Loose Tube or Ribbon
Number of Input Fibers	24	36
Splitter Module Capacity	9	14
Parking Lot Capacity	64	128
Color	Beige	Beige

Future Access™ FDH-700 Fiber Distribution Hub



Interior Access



Translucent Adapter Caps



Fiber Management Area

Ordering Information - FDH Cabinet

PART NUMBER	DESCRIPTION
FD000707	FDH Cabinet, 72F (1 X 72), Pad Mount, 100' Input/Output, with Skirt
FD000712	FDH Cabinet, 72F (1 X 72), Pole Mount, 100' Input/Output, Mount Bracket
FD000733	FDH Cabinet, 144F Ribbon (1 X 144), Pad Mount, 100' Input/Output, with Skirt
FD000704	FDH Cabinet, 144F (1 X 144), Pad Mount, 100' Input/Output, with Skirt
FD000714	FDH Cabinet, 144F (1 X 144), Pole Mount, 100' Input/Output, Mount Bracket
FD000706	FDH Cabinet, 144F (2 X 72), Pad Mount, 100' Input/Output, with Skirt
FD000713	FDH Cabinet, 144F (2 X 72), Pole Mount, 100' Input/Output, Mount Bracket
FD000720	FDH Cabinet, 144F (2 X 72), Pole Mount, with 100' w/ Bottom Cable Entry, Mount Bracket
FD000719	FDH Cabinet, 144F (72 + 3 x 24 Armored), Pad Mount, 100' Input/Output, with Skirt
FD000705	FDH Cabinet, 216F (1 X 216), Pad Mount, 100' Input/Output, with Skirt
FD000716	FDH Cabinet, 216F (1 X 216), Pole Mount, 100' Input/Output, Mount Bracket
FD000709	FDH Cabinet, 216F (144 + 72), Pad Mount, 100' Input/Output, with Skirt
FD000715	FDH Cabinet, 216F (144a + 72b), Pole Mount, 100' Input/Output, Mount Bracket
FD000708	FDH Cabinet, 216F (3 X 72), Pad Mount, 100' Input/Output, with Skirt
FD000701	FDH Cabinet, 288F (1 X 288), Pad Mount, 100' Input/Output, with Skirt
FD000732	FDH Cabinet, 288F (1 X 288), Pad Mount, Show Unit, with Skirt
FD000718	FDH Cabinet, 288F (1 X 288), Pole Mount, 100' Bottom In/Output, Mount Bracket
FD000702	FDH Cabinet, 288F (1 X 288), Pole Mount, 100' Input/Output, Mount Bracket
FD000711	FDH Cabinet, 288F (2 X 144), Pad Mount, 100' Input/Output, with Skirt
FD000740	FDH Cabinet, 288F Ribbon, (2 X 144), Pole Mount, 100' Input/Output, Mount Bracket
FD000717	FDH Cabinet, 288F (2 X 144), Pole Mount, 100' Input/Output, Mount Bracket
FD000703	FDH Cabinet, 288F (2 X 72 + 144), Pad Mount, 100' Input/Output, with Skirt
FD000710	FDH Cabinet, 288F (4 X 72), Pad Mount, 100' Input/Output, with Skirt
FD000729	FDH Cabinet, 288F in 432 Chassis, (1 X 288), Pad Mount, 100' Input/Output, with Skirt
FD000723	FDH Cabinet, 360F (144a + 72b + 144c), Pad Mount, 100' Input/Output, with Skirt
FD000730	FDH Cabinet, 360F (216a + 144b), Pad Mount, 100' Input/Output, with Skirt
FD000726	FDH Cabinet, 360F (216a + 144b), Pole Mount, 100' Input/Output, Mount Bracket
FD000724	FDH Cabinet, 360F (5 X 72), Pad Mount, 100' Input/Output, with Skirt
FD000727	FDH Cabinet, 432F (144a + 288b), Pad Mount, 100' Input/Output, with Skirt
FD000731	FDH Cabinet, 432F (2 X 216), 96 Input (12 + 84), Pad Mount, 100' In/Out, with Skirt
FD000721	FDH Cabinet, 432F (2 X 216), Pad Mount, 100' Input/Output, with Skirt
FD000722	FDH Cabinet, 432F (2 X 216), Pole Mount, 100' Input/Output, Mount Bracket
FD000728	FDH Cabinet, 432F (288a + 144b), Pole Mount, 100' Input/Output, Mount Bracket
FD000725	FDH Cabinet, 432F (3 X 144), Pad Mount, 100' Input/Output, with Skirt

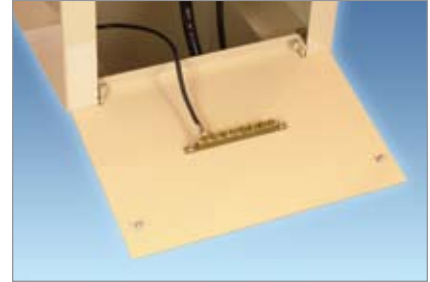
Future Access™ FDH-700 Fiber Distribution Hub



Door Latch Closed



Multiple Cable Entry Ports



Rear Grounding Block

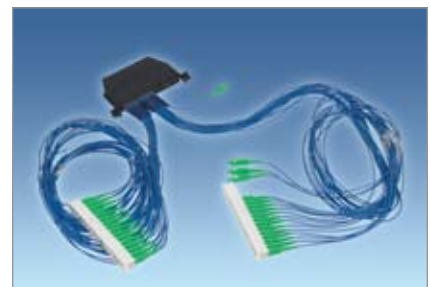
Ordering Information - Accessories

PART NUMBER	DESCRIPTION
FD000644	Additional 12" Mounting Skirt for Pad Mount FDH (All Cabinet Sizes)
FD000158	Hand-hole, Split lid design, 60"L x 36"W x 24"D, HDPE Structural Foam, Stainless Hardware, Green (Percell)
FD000525	Hand-hole, Split lid design, 26"L x 24"W x 24"D, HDPE Thermoplastic, Green (Channell)
FD000523	Hand-hole, Split lid design, 48"L x 30"W x 24"D, Polymer Concrete (Quazite), (Hubell)
FC000524	Hand-hole, Split lid design, 60"L x 36"W x 30"D, Polymer Concrete (Quazite), (Hubell)
FD000231	Kit, FDH 72 Fiber Distribution, with 100 Foot Stub (FDH-100 series only)
FD000525	Channell Hand Hole Box (SGLB2436170001008), Green

Future Access™ Splitter Module

Specifications

PARAMETER	VALUE	
	1 X 16	1 X 32
Wavelength Range	1280nm-1650nm	1280nm-1650nm
Typical Insertion Loss	12.9	16.6
Max Insertion Loss	14.0	17.5
Typical Uniformity	1.2	1.5
Max Uniformity	1.5	2.0
Return Loss	>55	>55
Directivity	>55	>55
PDL	0.20	0.20



Future Access Splitter Module

Ordering Information

FUTURE ACCESS SPLITTER MODULES	
FD000039	1x32 Future Access Splitter Module, Bend Insensitive Pigtailed, Parking Lots, SC-APC connectors
FD000160	1x16 Future Access Splitter Module, Bend Insensitive Pigtailed, Parking Lots, SC-APC connectors
FD000161	2x16 Future Access Splitter Module, Bend Insensitive Pigtailed, Parking Lots, SC-APC connectors
FD000162	Dual 1x16 Future Access Splitter Module, Bend Insensitive Pigtailed, Parking Lots, SC-APC connectors

Features

- One common splitter for all FDH
- Preconnectorized SC-APC inputs mean efficient, no-splice installation
- Bend radius protection to 15mm in a 2.0mm pigtail using SR-15e fiber
- Glass-reinforced thermoplastic housing
- Easy retrofit into previously deployed hubs