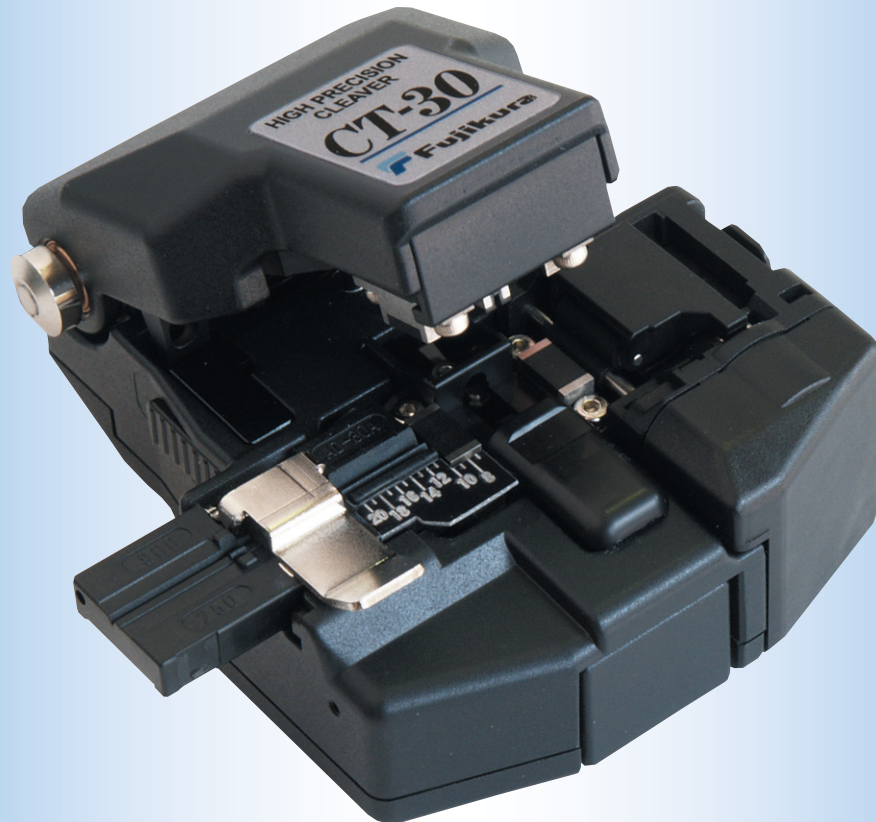


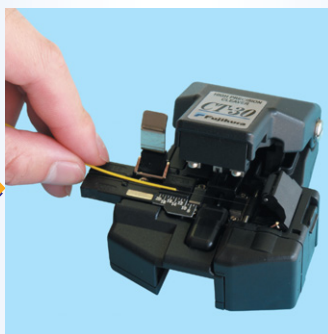
CT-30

series

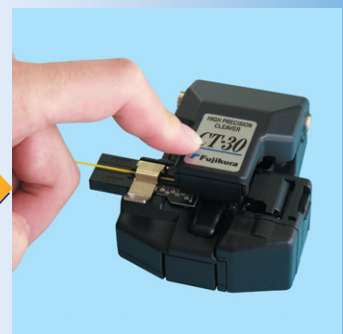
High Precision Fiber Cleaver



1. Blade setting



2. Fiber placing



3. Cleaving

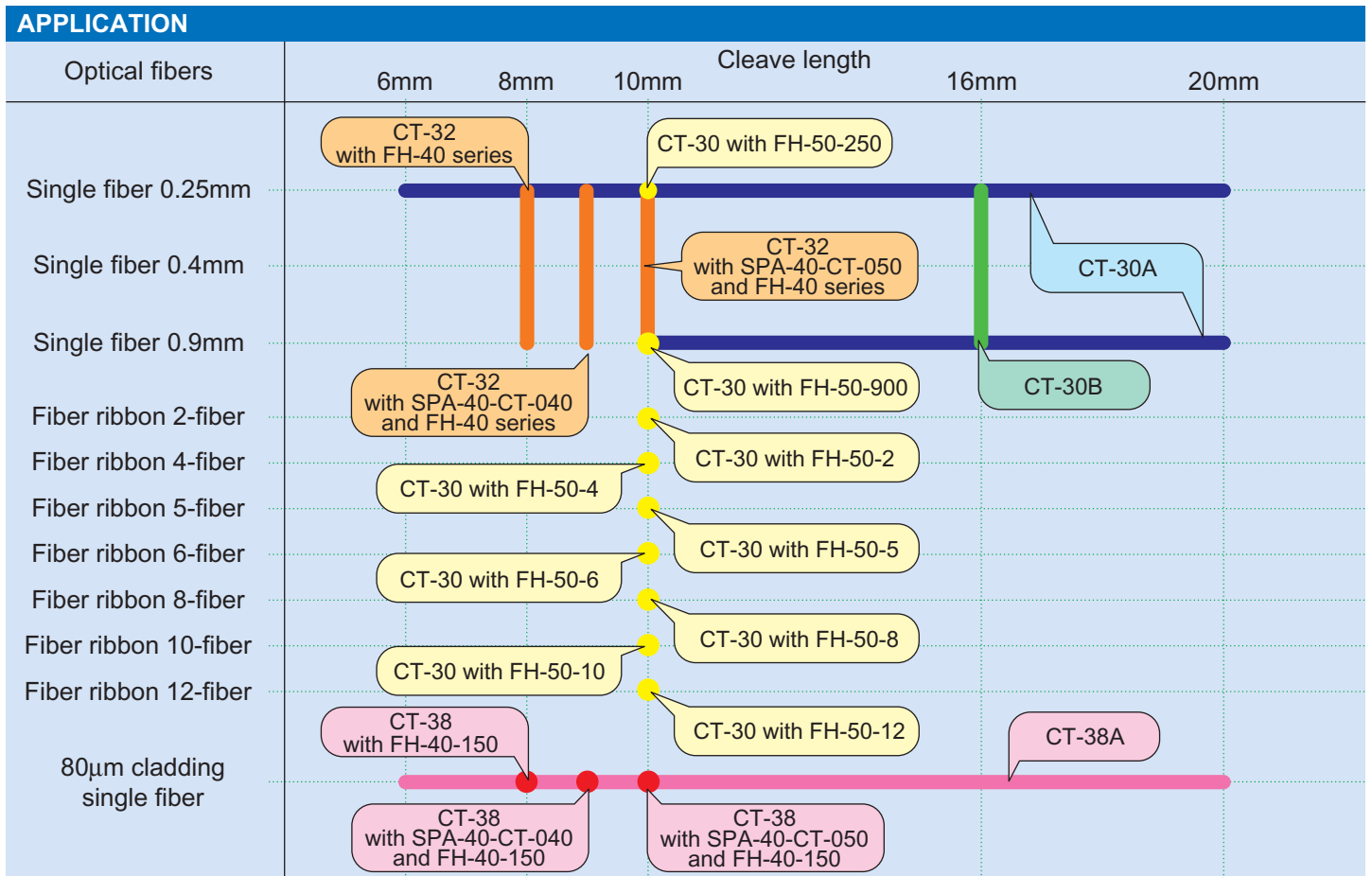
FEATURES

- Compact body & light weight
- Applicable up to 12-fiber cleaving
- 48,000 fibers blade life (3 height x 16 positions)
- Fiber scrap collection-free

SPECIFICATION	
Applicable fibers	Silica optical fiber
Bare fiber diameter	125µm
Cleaving angle	0.5 degrees at single fiber
Blade positions	3 height and 16 rotating positions
Blade life	48,000 fibers (1,000 fibers x 3 height x 16 positions)
Dimensions	69W × 82D × 41H (mm)
Weight	180g

VARIATION				MODELS	STANDARD PACKAGE			
Cladding dia. (µm)	Fiber count	Cleave length (mm)	Fiber placing		Main body	Fiber plate	Cleaver spacer	Fiber collector
125	1 to 12	10	Fiber holder	CT-30	CT-30	-	-	Provided
125	Single	6 to 20	Fiber plate	CT-30A	CT-30	AD-30A	-	Provided
125	Single	16	Fiber plate	CT-30B	CT-30	AD-30B	-	Provided
125	Single	8, 9, 10	Fiber holder	CT-32	CT-32	-	SPA-40-CT-040	Provided
80	Single	8, 9, 10	Fiber holder	CT-38	CT-38	-	SPA-40-CT-040	Not applicable
80	Single	6 to 20	Fiber plate	CT-38A	CT-38	AD-30A	SPA-40-CT-050	Not applicable

Short cleave length of 3, 4, and 5mm available by short stripping by HJS-02 or HJS-02-80 with SPA-40-HJS-030 spacer.



FIBER HOLDERS										
Usage	For ribbon / bundled fiber							For single fiber		FSM-40PM/-40F
Fiber holder	FH-50-2	FH-50-4	FH-50-5	FH-50-6	FH-50-8	FH-50-10	FH-50-12	FH-50-250	FH-50-900	FH-40 series
Fiber count	2	4	5	6	8	10	12	1	1	1
Cleave length(mm)	10	10	10	10	10	10	10	10	10	3, 4, 5, 8, 9, 10

Specifications and descriptions are subject to change without prior notice.

Fujikura Ltd.

Fujikura Asia Ltd.

Fujikura Europe Ltd.

AFL Telecommunications

1-5-1, Kiba, Koto-ku, Tokyo 135-8512, Japan
 Phone : +81-3-5606-1164 Fax : +81-3-5606-1534 <http://www.fujikura.co.jp>
 460, Alexandra Road, #22-01 PSA Bldg., Singapore 119963
 Phone : +65-6-271-1312 Fax : +65-6-278-0965 <http://www.fujikura.co.sg>
 C51 Barwell Business Park, Leatherhead Road, Chessington, Surrey KT9 2NY, UK
 Phone : +44-20+8240-2000 Fax : +44-20-8240-2010 <http://www.fujikura.co.uk>
 260, Parkway East, Duncun, SC29334, USA
 Phone : +1-800-235-3423 Fax : +1-800-926-0007 <http://www.aftele.com>